

Compact solutions for presentation, teaching and learning to the Meeting Room or Classroom

Interactive Touch Screen

- Install anywhere with ease
- Tailor-made sizes to match various needs
- Eco-friendly with LED backlight
- Multi-touch and gestures recognition for powerful presentation



Advanced Features



Plug & Play

“*Our touch function*” is compatible with Microsoft Human Interface Device Protocol. User can experience the touch function without driver installation.



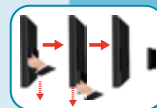
Multi- touch

“*Our interactive touch screen*” is based on HiteVision owned infrared sensor technology realize up to 4 points touch to enhance the productivity and to communicate effectively, intuitively and naturally.



Eco-Friendly

“*Our interactive touch screen*” adopts LED backlight which offers a thinner panel, lower power consumption, better heat dissipation, brighter display, and better contrast level and produce less pollution on disposal.



Easy Maintenance

Sophisticated mechanical design for easy maintenance. Only one person can operate the whole process of disassembly.



WIPS (optional)

Wireless Interactive Presentation Solution for HiteVision Interactive Touch Screen which breaks the inherent cognition of presentation interactively and is the trend of presentation revolution. User can achieve a totally wireless interactive presentation solution with gadgets (iPad, iPhone, Android phone or Tablet).



Model Name	TWB-E55	TWB-E65	TWB-E70
Backlight	LED	LED	LED
Display Area	1209.6 x 680.4mm	1428.5 x 803.5mm	1538.88 x 865.62mm
Active Screen Size	55"	65"	70"
Display Ratio	16:9	16:9	16:9
Resolution	1920 x 1080Pixel	1920 x 1080Pixel	1920 x 1080Pixel
Display Colors	10bit	10bit	10bit
Brightness	380cd/m ²	360cd/m ²	350cd/m ²
Contrast	4000:1	4000:1	4000:1
Response Time	5.5ms	8 ms	4ms
Video System / Audio System	PAL / NTSC / SECAM	PAL / NTSC / SECAM	PAL / NTSC / SECAM
AV Inputs / Outputs	Inputs: USB Media Play Port x 1, Touch Frame USB Port x 3, HDMI x 2, S-Video x 1, YPbPr/YCbCr/Audio x 2, VGA x 3, PC Audio x 3, AV x 1, RS232 x 1 Outputs: AV x 1, SPDIF x 1, VGA x 1		
Speaker Output Power	10W x 2	10W x 2	10W x 2
Multimedia File Formats Support	Image: JPEG, BMP, PNG Video: MPEG1, MPEG2, MPEG4, H264, RM, RMVB, MOV, MJPEG, VC1, Divx, FLV (Support 1080P HD Decoding) Audio: WMA, MP3, M4A, (AAC)		
3D Display	NO	NO	NO
Power Consumption	Maximum <150W Standby Mode <1W	Maximum <220W Standby Mode <0.5W	Maximum <240W Standby Mode <0.5W
Working Voltage	AC 100-240V, 50/60Hz	AC 100-240V, 50/60Hz	AC 100-240V, 50/60Hz

Touch

	*Toughened Glass / Anti Glare Toughened Glass	*Toughened Glass / Anti Glare Toughened Glass	*Toughened Glass / Anti Glare Toughened Glass
Touch Surface			
Touch Sensor	IR	IR	IR
HID support	√	√	√
Touch Points	4 Points	4 Points	4 Points
Writing Tools	Pen or Finger	Pen or Finger	Pen or Finger
Touch Resolution	4096 x 4096	4096 x 4096	4096 x 4096
Scan Speed	8ms	8ms	8ms
Cursor Speed	120 Points/s	120 Points/s	120 Points/s
Positioning Accuracy	1mm	1mm	1mm
Communication Interface	USB	USB	USB
Transmission Range	7.5m	7.5m	7.5m

Storage Conditions / Packing Information

Storage Temperature / Humidity	-20°C ~ 60°C / 10% ~ 90%	-20°C ~ 60°C / 10% ~ 90%	-20°C ~ 60°C / 10% ~ 90%
Working Temperature / Humidity	0°C ~ 50°C / 10% ~ 90%	0°C ~ 50°C / 10% ~ 90%	0°C ~ 50°C / 10% ~ 90%
Mountin (optional)	Wall-mounted / Stand	Wall-mounted / Stand	Wall-mounted / Stand
Outline Dimension	1301.98 x 771.92 x 97.4mm	1553.5 x 923.5 x 98mm	1642.86 x 969.60 x 110.9mm
Packing Dimension	1440 x 900 x 265mm	1680 x 1050 x 275mm	1780 x 1100 x 282mm
Net Weight	46KG	67KG	70KG
Gross Weight	59KG	80KG	83KG

HiteVision

Hitevision Authorized Distributor



ABC Infosystems Pvt. Ltd.

Regd Off: 1/3 2nd Floor East Patel Nagar New Delhi 110008
 Branch Office: B-64, Basement, Inderpuri, New Delhi-110012
 Ph: +91-11-45138349, 25885337
 Cell:+91-9810076839, 9310076839
 Email: anjani@abcinfo.in; anjanijaiswal@yahoo.com
 Web: www.abcinfo.in



The contents of this document are subject to change without notice.