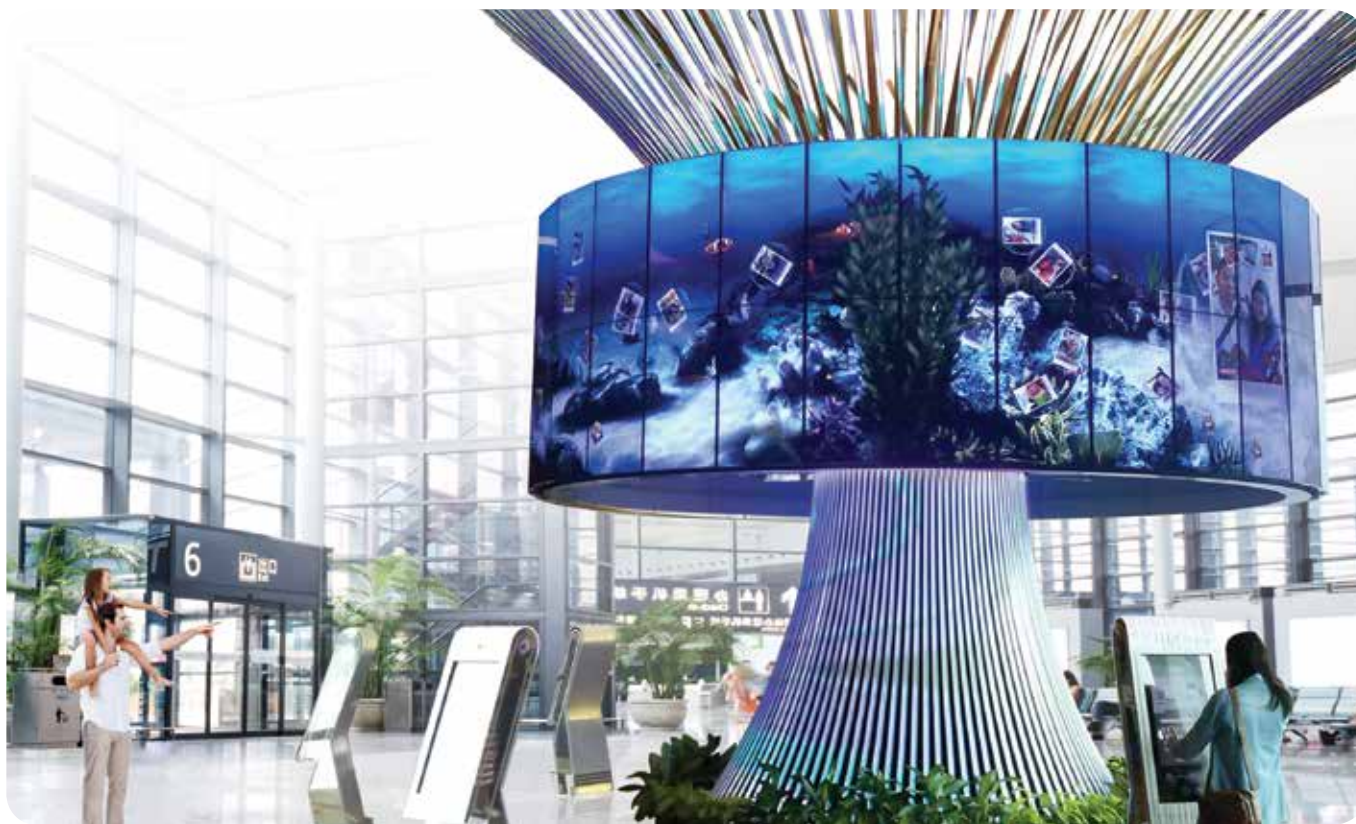


LG's near Seamless video wall ULTRA NARROW BEZEL PREMIUM DISPLAY LV75A/77A



THE NARROWEST BEZEL OF LG VIDEO WALL DISPLAY

Bezel width of 3.5mm in 55" Super-Narrow Bezel display creates a visually stunning video wall that is easily installed, maintained and managed.

55LV77A / 55LV75A

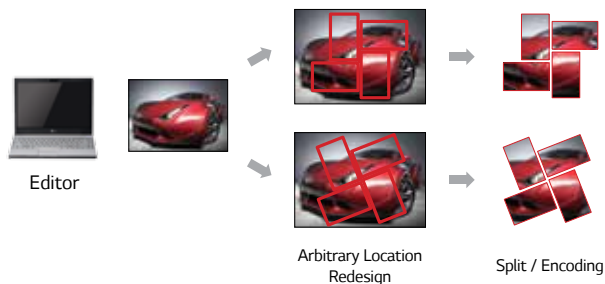


Active to Active
3.8mm
Bezel to Bezel
3.5mm

2.25mm(Left/Top) / 1.25mm(Right/Bottom)

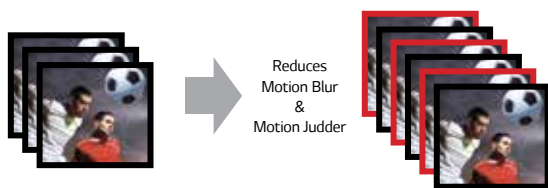
SUPERSIGN V CONTENT MANAGEMENT S/W

Flexible content editing in various layouts including regular matrix and irregular video-wall without the need of an additional video wall console.



TRUMOTION™ 60Hz REFRESH RATE

TruMotion™ 60Hz refresh rate reduces motion blur and judder, allowing customers to enjoy video content with improved clarity.

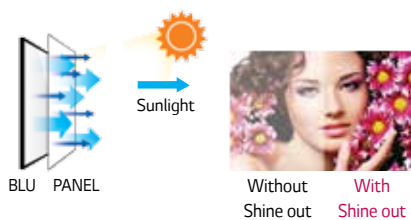


30Hz

60Hz

SHINE-OUT

Shine-out film enhances the image quality by reducing external light reflections for a vivid clear image.



Without Shine out

With Shine out

ULTRA NARROW BEZEL PREMIUM DISPLAY

LV77A/LV75A 55"



FEATURES

- Direct LED
- 700cd/m² (55LV77A), 500cd/m² (55LV75A)
- 3.5mm (Bezel to Bezel)
- 1,920 x 1080 (FHD)
- DP1.2 Daisy Chain
- 24/7 Operation
- Landscape/Portrait Mode

SPECIFICATIONS

55LV75A/55LV77A

PANEL	Screen Size	LV75A: 55" (139cm), LV77A: 55" (139.7cm)
	Panel Technology	IPS
	Aspect Ratio	16 : 9
	Native Resolution	1,920 x 1,080 (FHD)
	Brightness	500cd / m ² (LV75A), 700cd / m ² (LV77A)
	Contrast Ratio	1,400 : 1
	Dynamic CR	500,000 : 1
	Viewing Angle (H x V)	178 x 178
	Response Time	12ms (G to G)
CONNECTIVITY	Input	
	Digital	DVI-D(1), HDMI(1), Display Port(1) with HDCP for all input
	Analogue	RGB(1), Shared Component(1), AV (1)
	Audio	PC Audio In (1)
	External Control	RS232C (1), RJ45 (1), IR Receiver (1)
	USB	Yes (1)
	Output	
	Digital	Display Port (1)
	Analogue	RGB(1)
	Audio	Audio Out (1)
	External Control	RS232C (1)
	Audio	
	Auto Volume	No
	Balance	No
	Audio Power	No
	Speaker On/off	No
	Clear Voice II	No
	Sound mode	No

PHYSICAL SPECIFICATION	Bezel Width	2.3mm(L/T), 1.3mm(R/B)
	Monitor Dimension (W x H x D)	121cm x 68cm x 9cm
	Weight (head)	23kg
	Carton Dimensions (W x H x D)	135cm x 85cm x 25.5cm
	Packed Weight	30.5kg
SPECIAL FEATURES	VESA™ Standard Mount Interface	600mm x 400mm
	Additional	Smart Energy Saving, Temp Sensor, Tile Mode, File Play with USB
ENVIRONMENT CONDITIONS	Operation Temperature	0°C ~ 40°C
	Operation Humidity	10% ~ 80%
POWER	Power Supply	100-240V~, 50/60Hz
	Power Consumption	
	Typical / Smart Energy Saving	LV75A : 60W/90W / LV77A : 230W/120W
	DPMS	0.7W
	Power Off	0.5W
STANDARD (CERTIFICATION)	Safety	UL / cUL / CB-Scheme / TUV / KC
	EMC	FCC Class "B" / CE / KCC / C-tick
	ErP / Energy Star	Yes / Yes (Energy Star 6.0)
MEDIA PLAYER COMPATIBILITY	Slot PC Compatible (optional)	No
	External Media player Attachable	Yes
SOFTWARE COMPATIBILITY	SuperSign Elite-w lite / Elite-c	Yes / Yes
ACCESSORY	Included	Remote Controller, Power Cable, DP Cable, Manual, IR Receiver, RS-232C Cable, Tiling Guide, Screw

* Image may differ slightly from actual product. Specifications are subject to change without prior notice.

DIMENSION (unit : mm)

